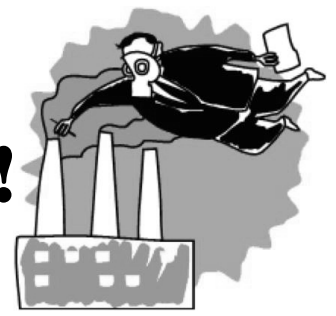




# CHESTER COUNTY ENVIRONMENT ALERT!!



## DID YOU KNOW?

Chester County Council unanimously supports locating a waste incinerator to import over 1500 tons of garbage every day into Chester County to burn for making electricity.

## DID YOU KNOW?

This plant would release around 1200 pounds of mercury into the air, after filtration, EVERY YEAR? In addition to the mercury would be sulfur dioxide, nitrogen oxides, carbon monoxide, carbon dioxide, lead, cadmium, chromium and many different dioxins.

## DID YOU KNOW?

SC is near the top of 50 states in terms of mercury contamination? Many SC waterways are on the DHEC mercury advisory list which cautions pregnant women and children to not eat certain fish from them.

## DID YOU KNOW?

One drop of mercury is so toxic, it can contaminate a 20 acre lake?  
\*\* 1200 pounds per year = 3.28 pounds per day \*\*

## DID YOU KNOW?

Dioxins are some of the most toxic substances known to man. Did you know there are currently no methods for continuously measuring or filtering of dioxins as the do for mercury and the other hazardous chemicals?

## DID YOU KNOW?

Chester County officials worked in secret for over a year, then in 27 days to pass needed resolutions. 4 of the 5 meetings were held in 10 days, while limiting public involvement.

## DID YOU KNOW?

Many of the short and long term jobs would not go to local citizens. The majority that do go to the locals would likely be at the lower end of the 60k average salary.

## DID YOU KNOW?

This incinerator can't be build until SC changes state laws allowing 1600 tons per day to be incinerated- current SC law only allows 600 tons per day to be incinerated  
**if you didn't know, ask your neighbors if they know-**

## WE NEED YOUR HELP

STOP COUNCIL FROM MAKING **GARBAGE** CHESTER'S BIGGEST IMPORT!  
**SCCRAP the Incinerator!**

VISIT [WWW.SCCRAP.COM](http://WWW.SCCRAP.COM)

**find us on Facebook & Twitter!**